

• INSTALLATION MANUAL

Always read this manual first before attempting to install or use the NetZero firebox. For your safety, always comply with all warnings and safety instructions contained in this manual to prevent personal injury or property damage. To view the full line of NetZero products, please visit www.netzerofire.com

NetZero Waterplace and Waterplace Platinum Firebox Series

Models: AA-11-05372 – NZW36F SS/LC/RC/TS
AA-11-05373 – NZW48F SS/LC/RC/TS
AA-11-05374 – NZW48F ST/P
AA-11-05375 – NZW72F SS/LC/RC/TS
AA-11-05376 – NZW72F ST/P

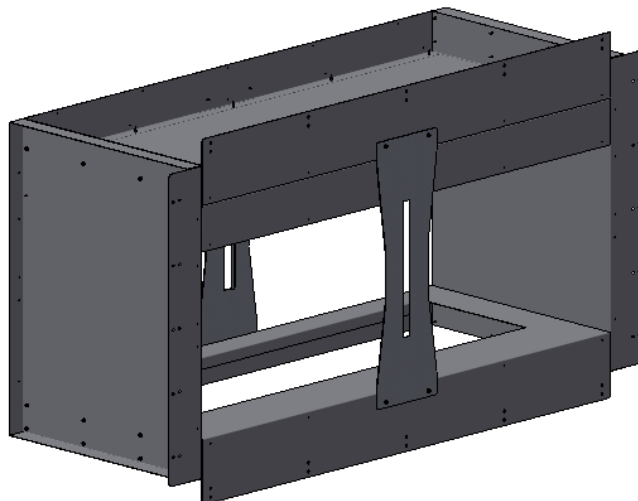
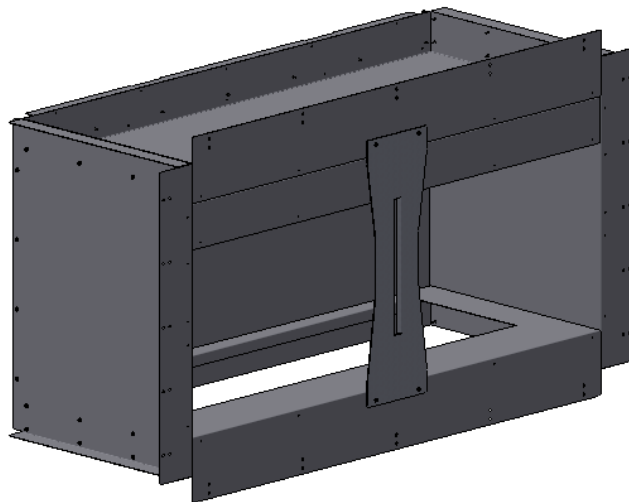


Table of Contents

1	IMPORTANT INFORMATION.....	3
1.1	Safety Information	3
2	FIREBOX INSTALLATION	4
2.1	Considerations:	4
2.2	Preparing for Installation	4
2.3	Included Parts	4
2.3.1	Single-Sided, Right-Corner, Left-Corner, and Three-Sided Firebox	4
2.3.2	See-Through and Peninsula Firebox	5
2.4	Configuring the Firebox for Installation	5
2.4.1	Removing a Side from The Firebox	6
2.5	Framing	6
2.5.1	Single-Sided Installation	8
2.5.2	Left-Corner or Right-Corner Installation	9
2.5.3	Three-Sided Installation	10
2.5.4	See-Through Installation	11
2.5.5	Peninsula Installation	12
2.6	Firebox Installation.....	13
2.7	Installing Finishing Material	14
2.7.1	Optional Finishing Guides	14
3	Electrical Connection	15
3.1	AC Power Connection	15
4	Burner Installation	15
4.1	Placing the Burner.....	15
4.2	Burner Specifications	16
4.3	AC Installation	16

1 IMPORTANT INFORMATION



1.1 Safety Information

Always use a qualified technician or service agency to repair this unit.

CAUTION: Read all instructions and warnings carefully before starting installation. Failure to follow these instructions may result in a possible electric shock, fire hazard and will void the warranty.

When using electrical appliances, basic precautions should always be followed to reduce the risk of fire, electric shock, and injury to persons, including the following:

- 1) Read all instructions before using the unit.
- 2) Do not operate any unit if the unit has been dropped or damaged in any manner. Contact Technical Service at sales@johnsongas.com.
- 3) Do not use outdoors.
- 4) To disconnect the unit, turn the controls OFF, disconnect power at the service panel.
- 5) Do not insert or allow foreign objects to enter any ventilation or exhaust opening as this may cause an electric shock or fire, or damage the unit.
- 6) To prevent a possible fire, do not block air intakes or exhaust in any manner.
- 7) Do not modify the unit. Use it only as described in this manual. Any other use not recommended by the manufacturer may cause fire, electric shock or injury to persons.
- 8) Do not burn wood or other materials in the unit.
- 9) Always use a certified electrician should new circuits or outlets be required.
- 10) Disconnect the power supply before performing any cleaning, maintenance or relocation of the unit.
- 11) When transporting or storing the unit, keep in a dry place, free from excessive vibration and store so as to avoid damage.

WARNING: Remote control contains small batteries. Keep away from children. If swallowed, seek medical attention immediately.

WARNING: Do not install battery backwards, charge, put in fire or mix with used or other battery types - may explode or leak causing injury.

NOTE: Changes or modifications not expressly approved by the party responsible for compliance could void user's authority to operate the equipment.

CAUTION: This equipment has been tested and found to comply with the limits for Class B digital device, pursuant to part 15 of the FCC Rules. These limits are designed to provide reasonable protection against harmful interference in a residential installation. This equipment generates, uses and can radiate radio frequency energy and, if not installed and used in accordance with the instructions, may cause harmful interference to radio or television reception, which can be determined by turning the equipment OFF and ON, the user is encouraged to try to correct the interference by one or more of the following measures:

- Reorient or relocate the receiving antenna.
- Increase the separation between the equipment and the receiver.
- Connect the equipment into an outlet on a circuit different from that to which the receiver is connected.
- Consult the dealer or an experienced radio/TV technician for help.

This device complies with Part 15 of the FCC Rules. Operation is subject to the following two conditions: (1) This device may not cause harmful interference, and (2) this device must accept any interference received, including interference that may cause undesired operation.

FCC CAUTION: Any changes or modifications not expressly approved by the party responsible for compliance could void the user's authority to operate this equipment.



CAUTION
RISK OF ELECTRIC SHOCK
DO NOT OPEN
NO USER-SERVICEABLE PARTS INSIDE



2 FIREBOX INSTALLATION

2.1 Considerations:

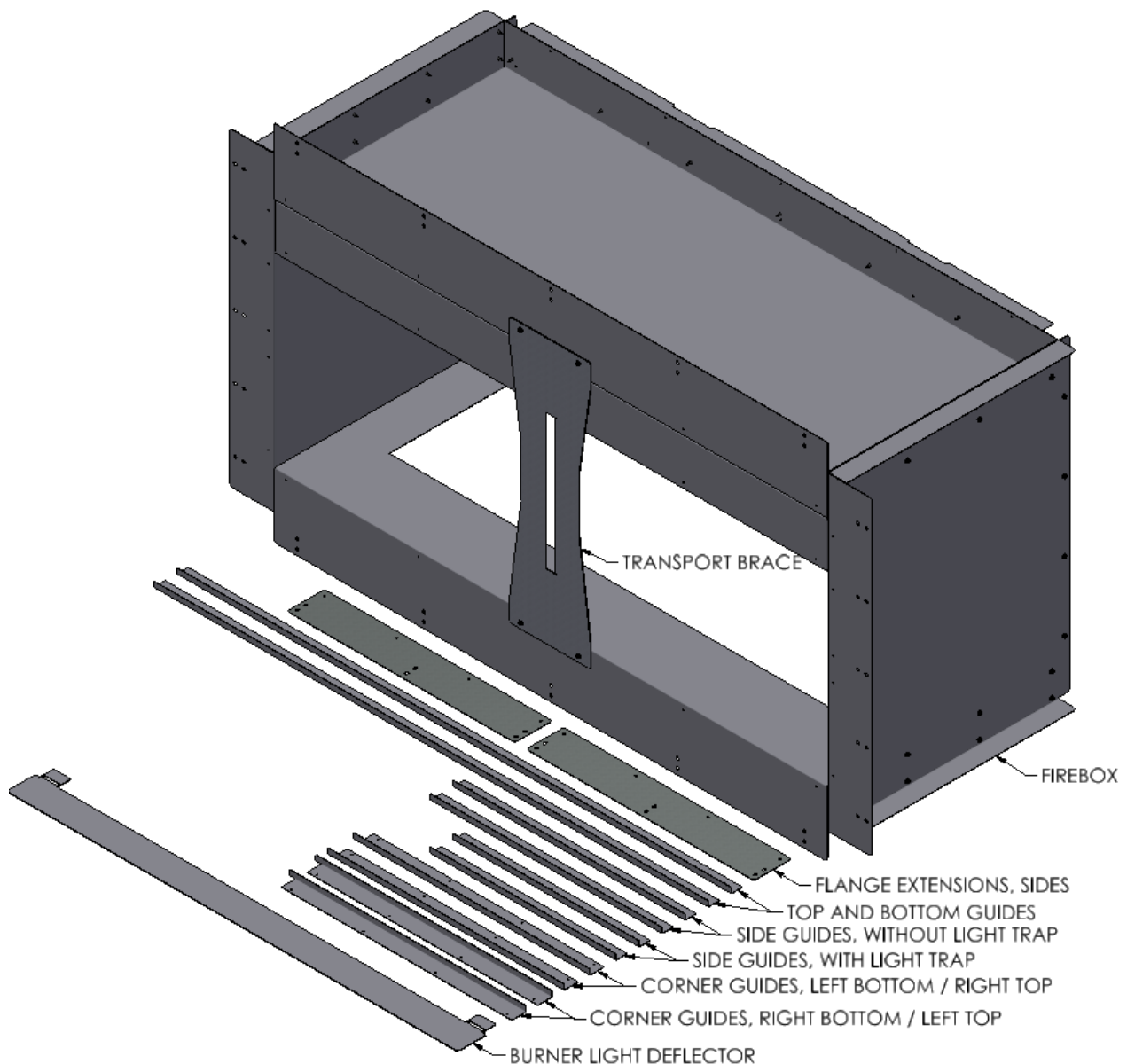
- Accessibility to electricity and 1/4" water line, like ice maker in fridge.
- Determine decorative materials and finishes you expect to use. Since there is no heat, there are virtually no limitations.
- Plan to make it easy to remove fireplace insert should maintenance or repairs become necessary.
- Avoid or prevent air currents from doors, windows, and existing HVAC system which affect flame quality.

2.2 Preparing for Installation

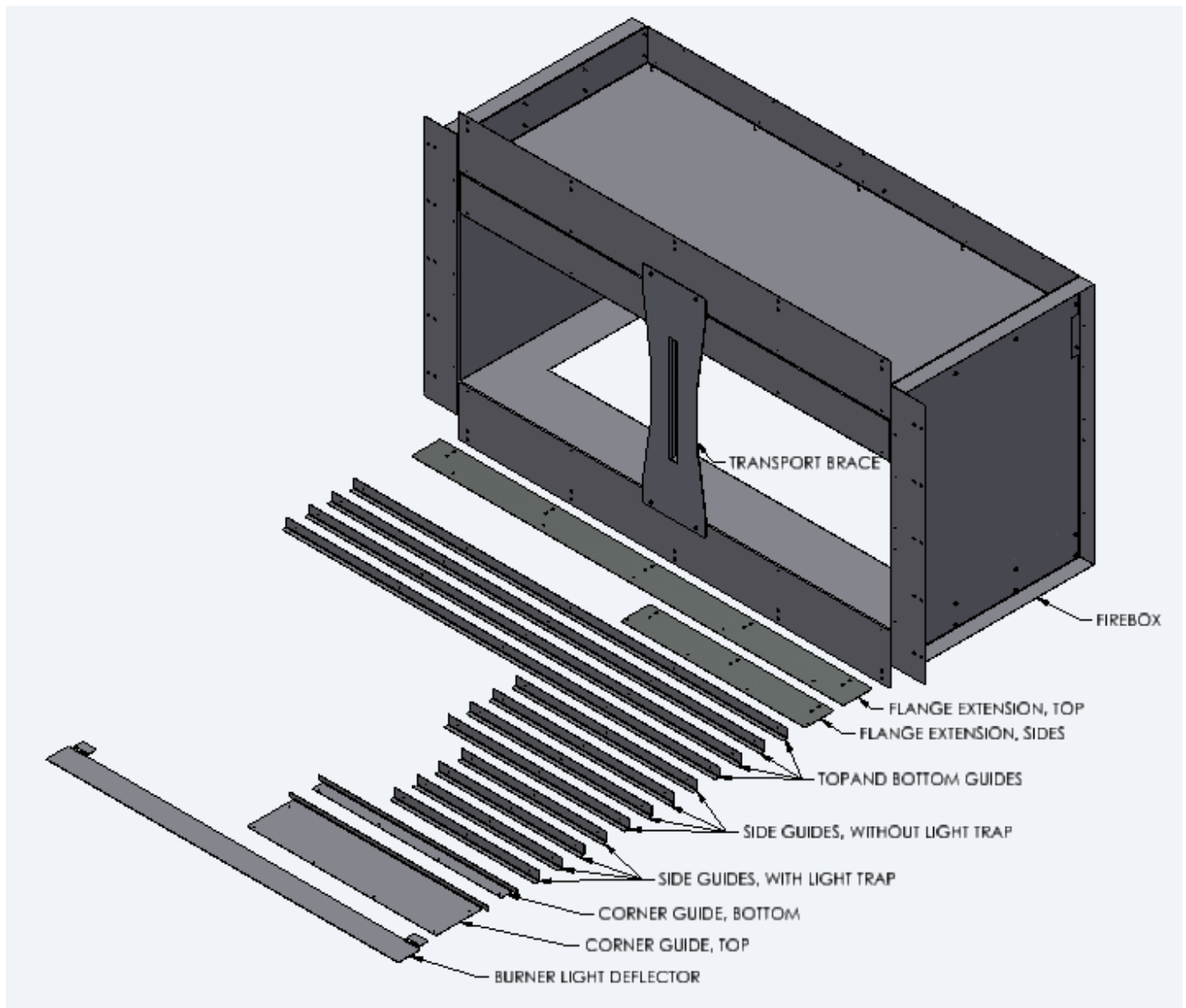
- Prepare equipment: Power drill, screws, screwdriver, and level
- Carefully remove the firebox and components from the packaging
- Inspect and report any parts damaged in shipment
- Read all instructions before starting the installation. Follow these instructions carefully during the installation to ensure maximum safety and benefit.

2.3 Included Parts

2.3.1 Single-Sided, Right-Corner, Left-Corner, and Three-Sided Firebox



2.3.2 See-Through and Peninsula Firebox

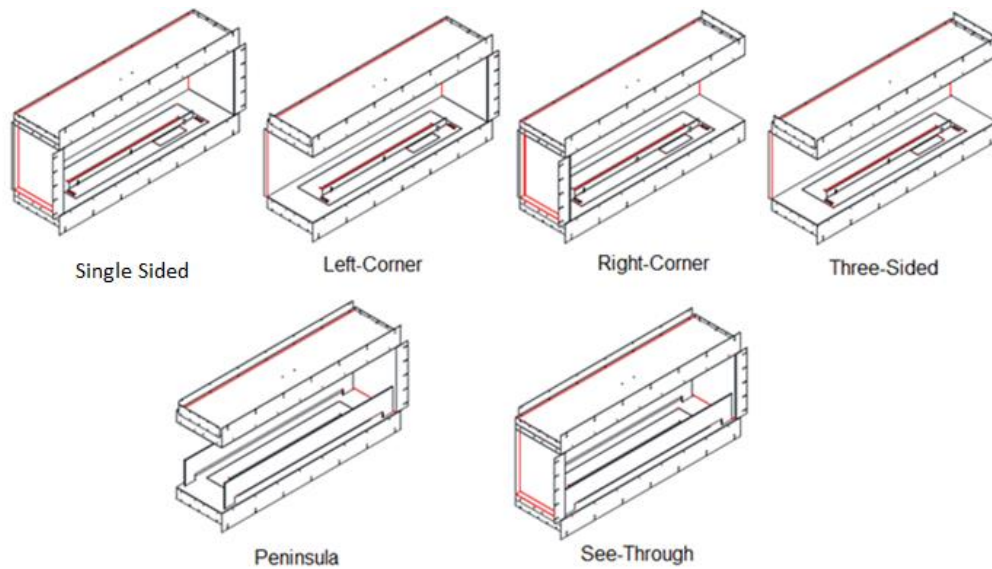


2.4 Configuring the Firebox for Installation

The NetZero Firebox can be installed in the following configurations. The firebox is ordered as a single-sided or see-through firebox.

The single-sided firebox can be configured into a left-corner, right-corner, or three-sided firebox by removing one or both sides.

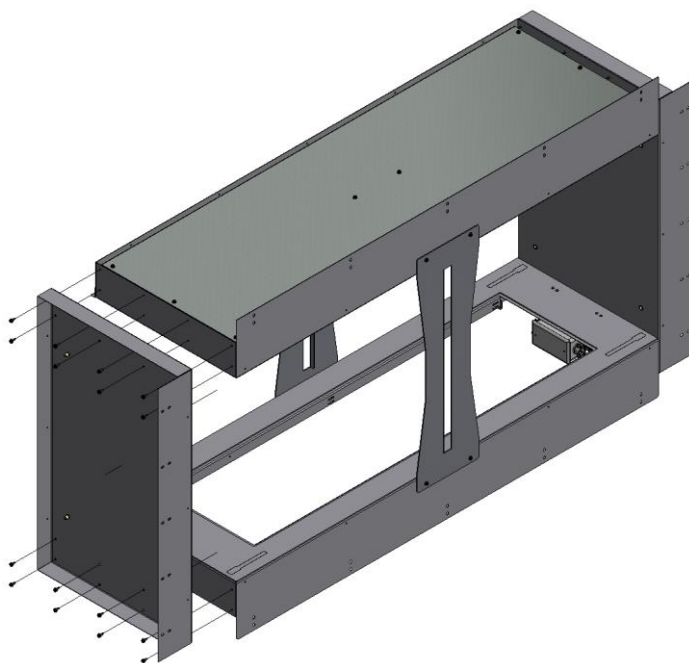
The see-through firebox can be configured into a peninsula firebox by removing one of the sides.



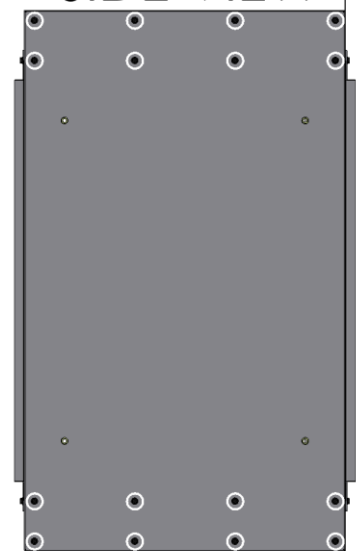
2.4.1 Removing a Side from The Firebox

To remove one or both sides from the firebox remove the (16) screws circled in white below from each side.

Note: If a side is removed, a side flange extension must be added to that side after the firebox is installed into the framing.



SIDE VIEW



REMOVE (16)
CIRCLED SCREWS

2.5 Framing

IMPORTANT: The framing above the firebox must be self-supporting. The firebox is not load-bearing.

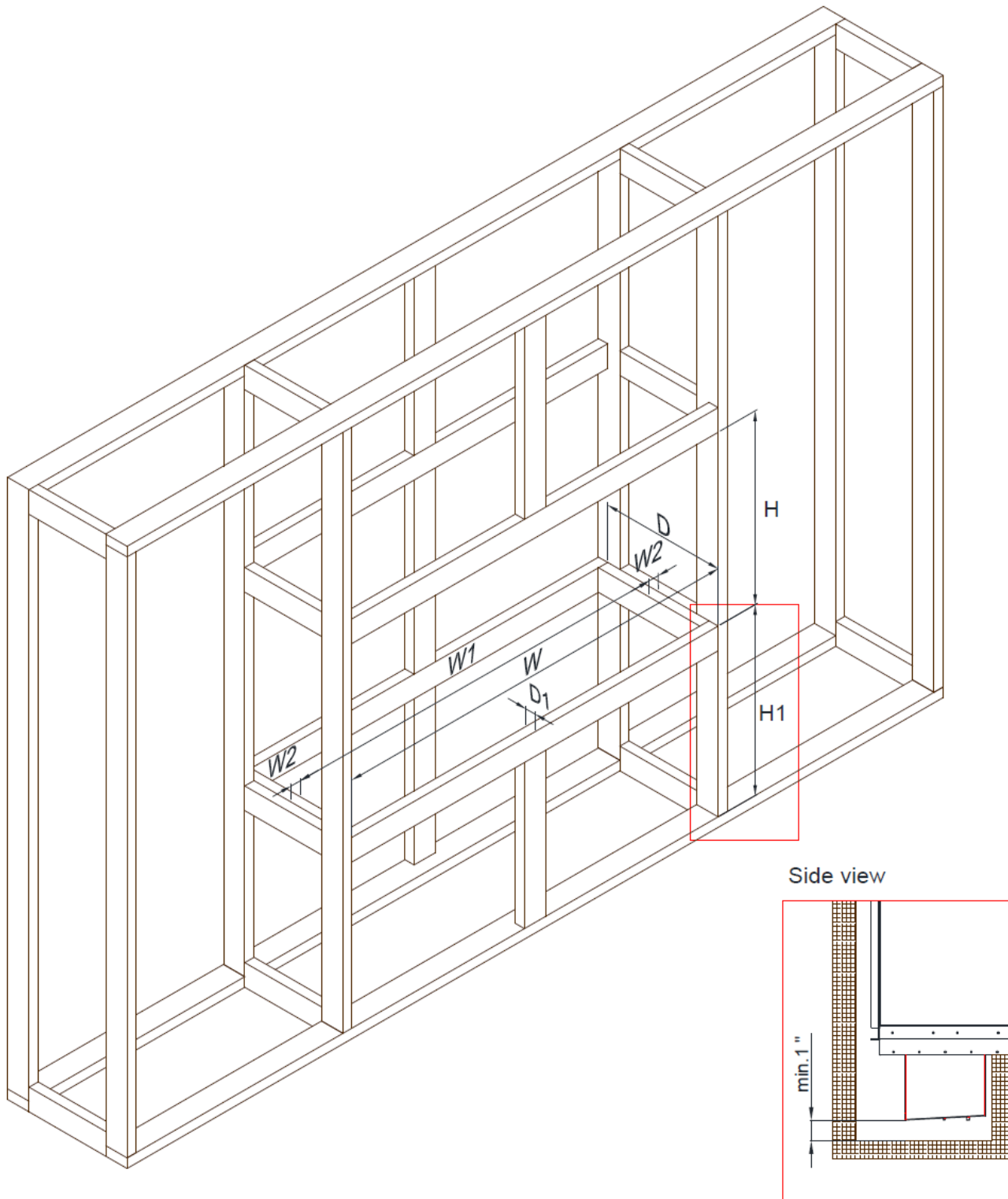
- The firebox must be installed on a level surface capable of supporting the firebox, burner, and full fuel capacity.

NOTE: Dimension W2 in the tables below must be wide enough to support the side flanges of the firebox.



2.5.1 Single-Sided Installation

Construct the main wall framework with the opening size shown in Table A.

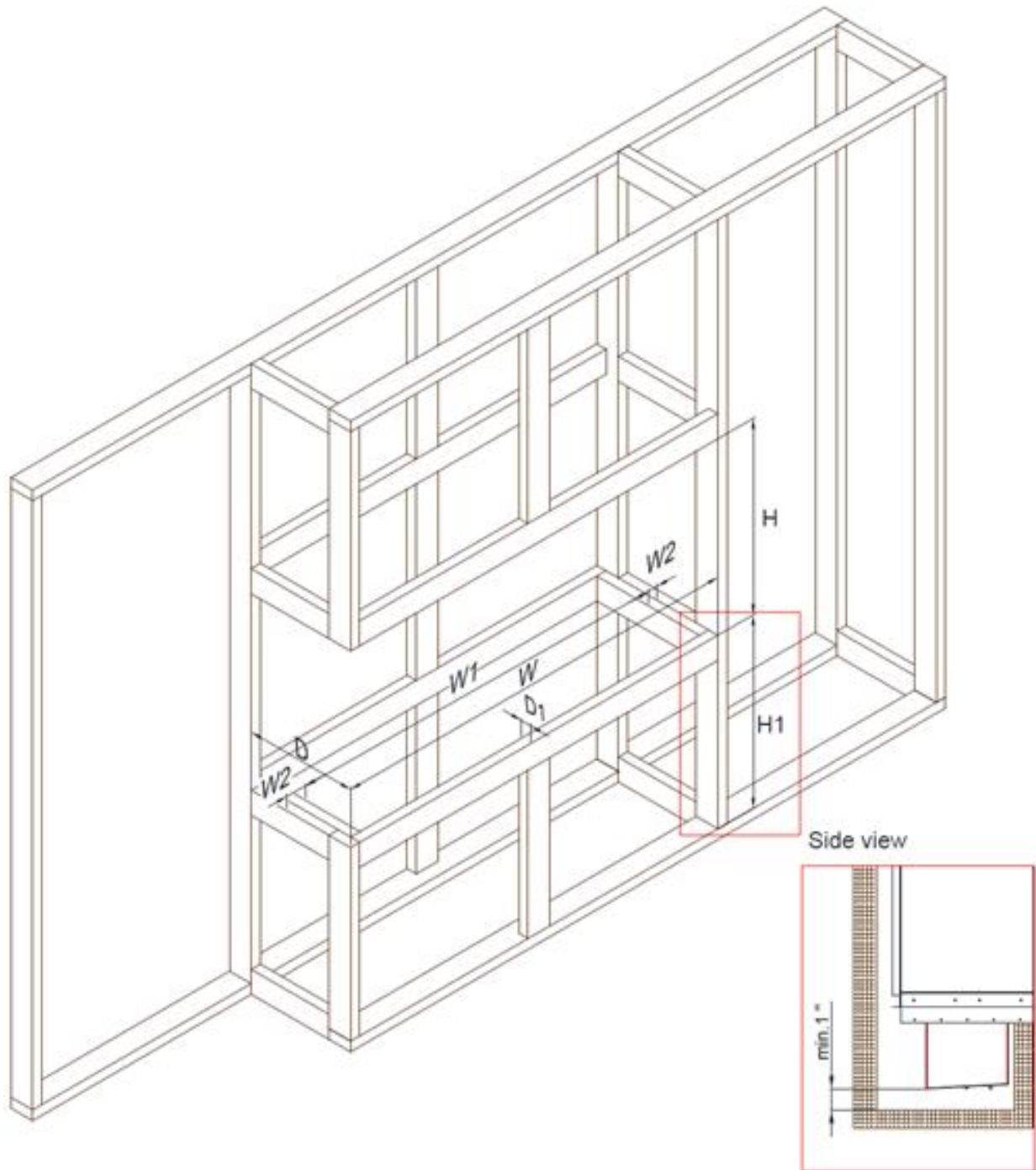


Firebox	W	W1	W2	D	D1 max	H	H1 min
	(in)	(in)	(in)	(in)	(in)	(in)	(in)
Single-Sided NZW36F	40	28-34	3-6	21	2	27 1/2	8
Single-Sided NZW48F	52	40-46					
Single-Sided NZW72F	76	64-70					

Table A

2.5.2 Left-Corner or Right-Corner Installation

Construct the main wall framework with the opening size shown in Table B.

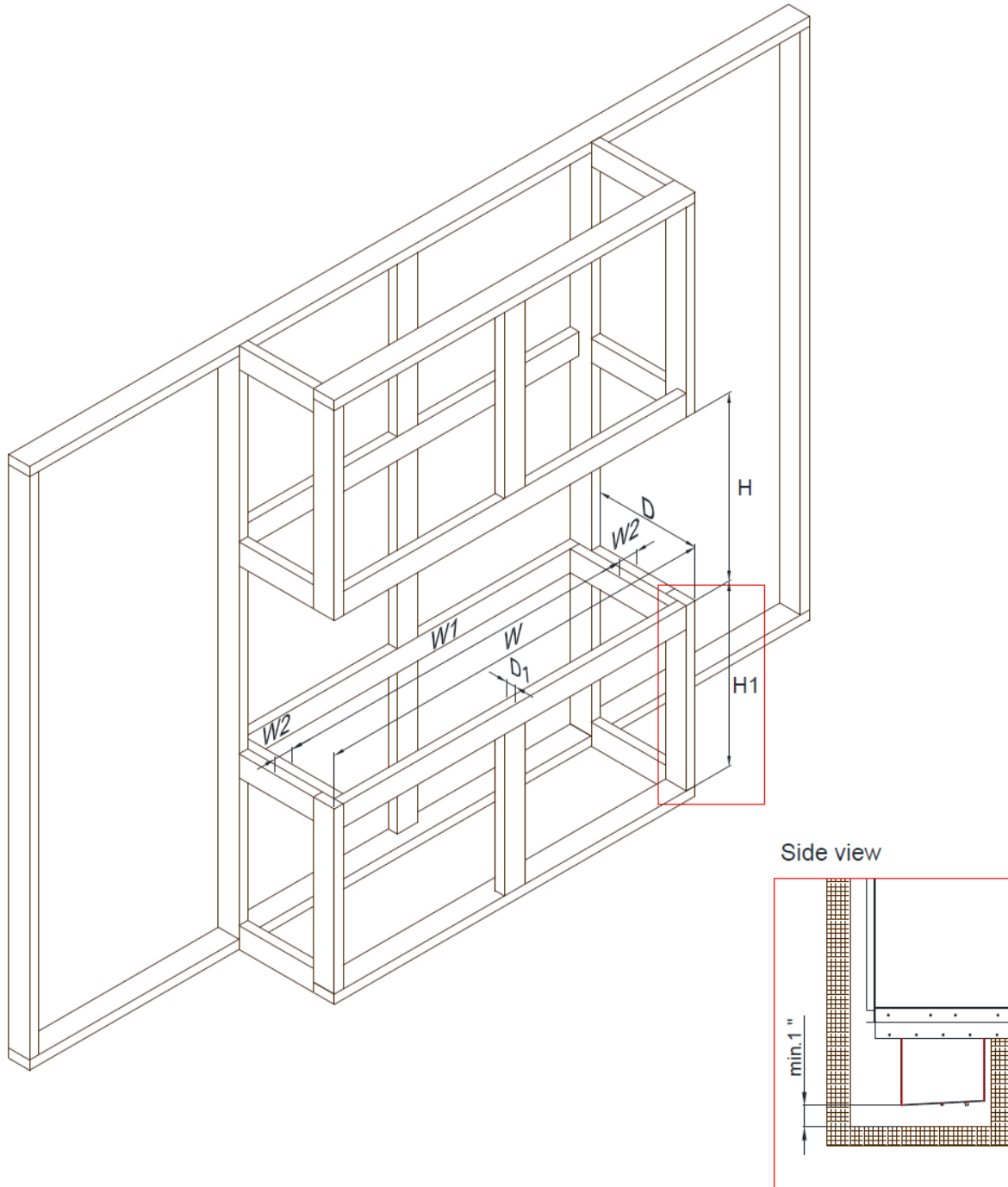


Firebox	W	W1	W2	D	D1 max	H	H1 min
	(in)	(in)	(in)	(in)	(in)	(in)	(in)
Left/Right-Corner NZW36F	38	26-32	3-6	21	2	27 1/2	8
Left/Right-Corner NZW48F	50	38-44					
Left/Right-Corner NZW72F	74	62-68					

Table B

2.5.3 Three-Sided Installation

Construct the main wall framework with the opening size shown in Table C.

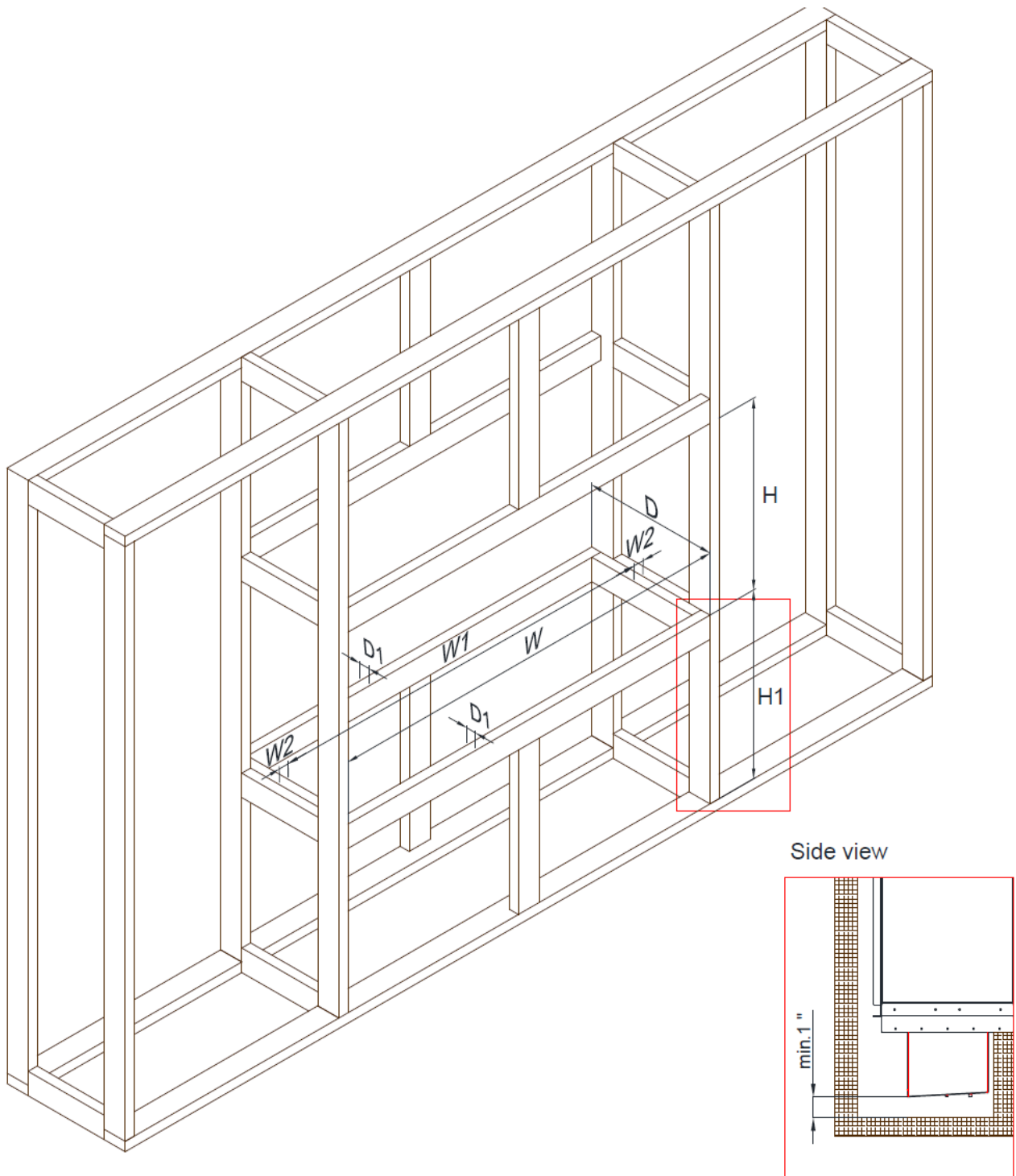


Firebox	W	W1 min	W2 max	D	D1 max	H	H1 min
	(in)	(in)	(in)	(in)	(in)	(in)	(in)
Three-Sided NZ36F	36	24	6	21	2	27 1/2	8
Three-Sided NZ48F	48	36					
Three-Sided NZ72F	72	60					

Table C

2.5.4 See-Through Installation

Construct the main wall framework with the opening size shown in Table D.

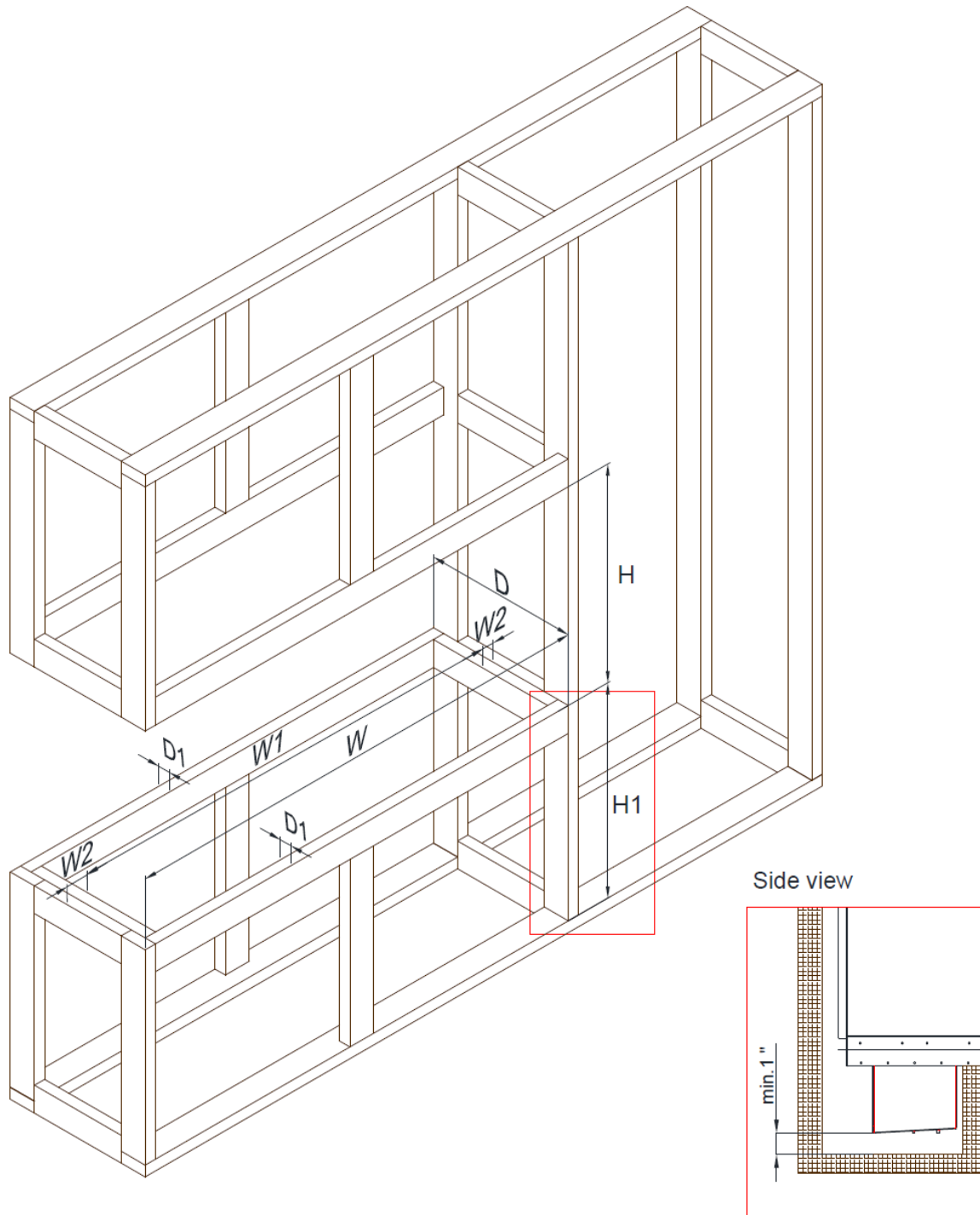


Firebox	W	W1	W2	D	D1 max	H	H1 min
	(in)	(in)	(in)	(in)	(in)	(in)	(in)
See-Through NZ48F	52	40-46	3-6	21	2	27 1/2	8
See-Through NZ72F	76	64-70					

Table D

2.5.5 Peninsula Installation

Construct the main wall framework with the opening size shown in Table E.

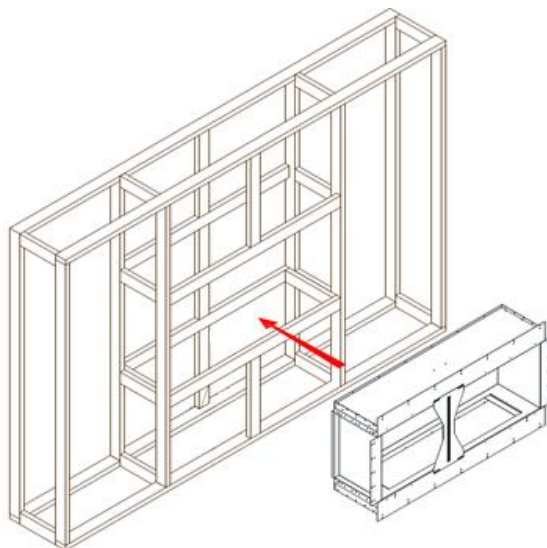


Firebox	W	W1	W2	D	D1 max	H	H1 min
	(in)	(in)	(in)	(in)	(in)	(in)	(in)
Peninsula NZ48F	50	38-44	3-6	21	2	27 1/2	8
Peninsula NZ72F	74	62-68					

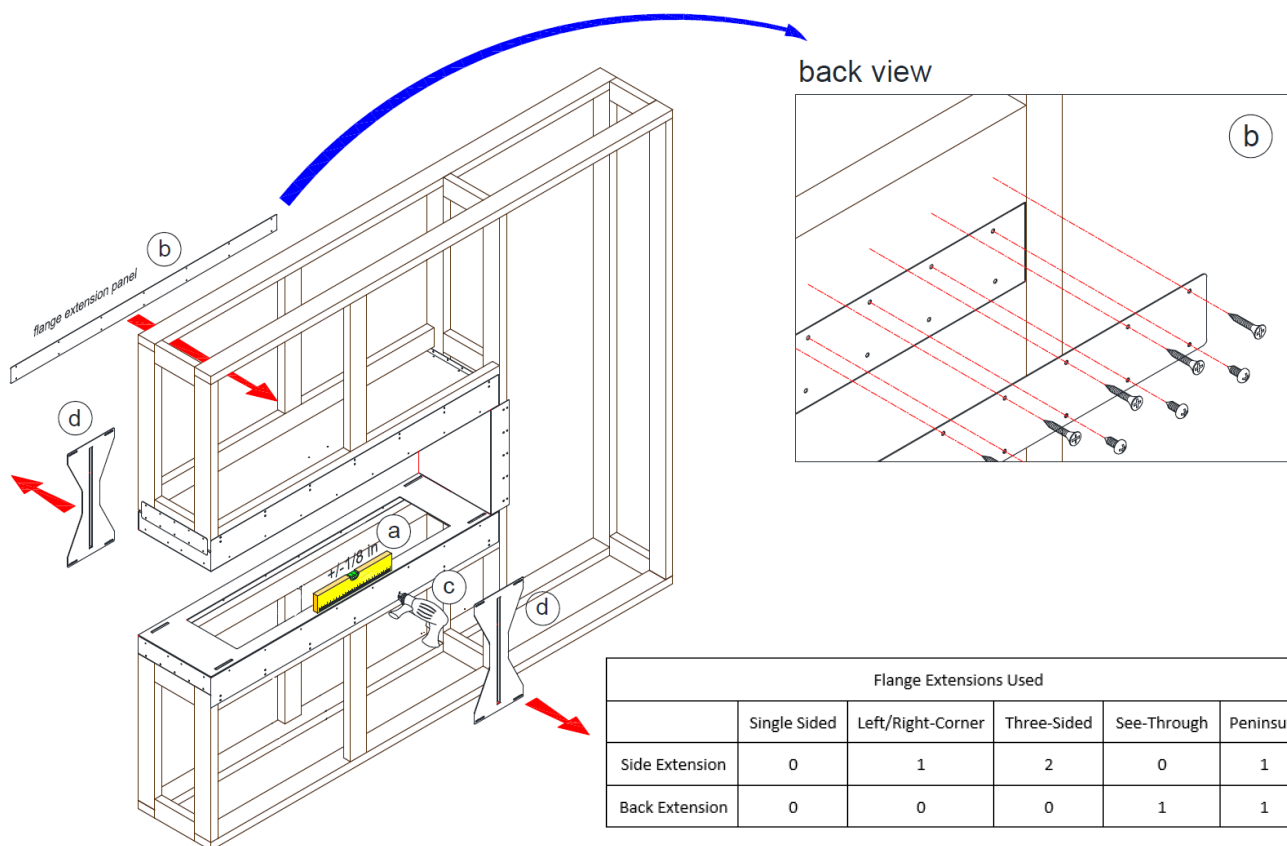
Table E

2.6 Firebox Installation

NOTE: Framing may look different based on configuration, the same steps still apply.



- Slide the firebox into the framing cavity. The firebox is shipped with stability bracket(s) installed on the open side(s) to keep the firebox square while in transport and during installation. Keep the bracket(s) on while installing the firebox into the framing. Once the firebox is secured in the framing the stability brackets can be removed. Make sure the firebox is level before securing it in place.
- For Left-Corner, Right-Corner, Three-Sided, See-Through, and Peninsula configurations, once the firebox has been slid into the framing, attach the included flange extension panels to the firebox. The extensions will allow the ends of the firebox to be attached to the framing.



- Secure the firebox to the framework with screws using the existing mounting holes on the firebox flanges.
- Remove the stability brackets.

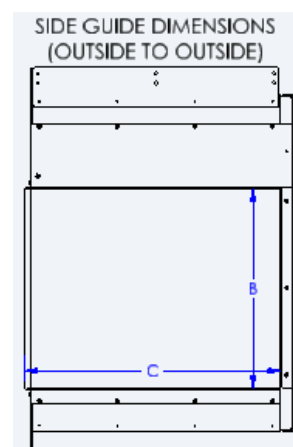
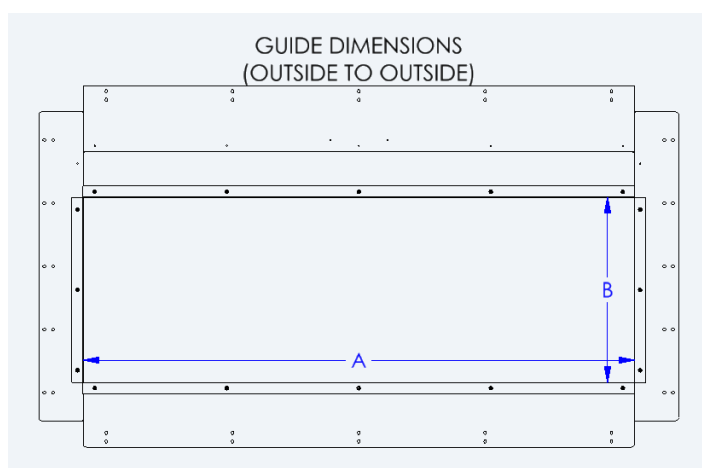
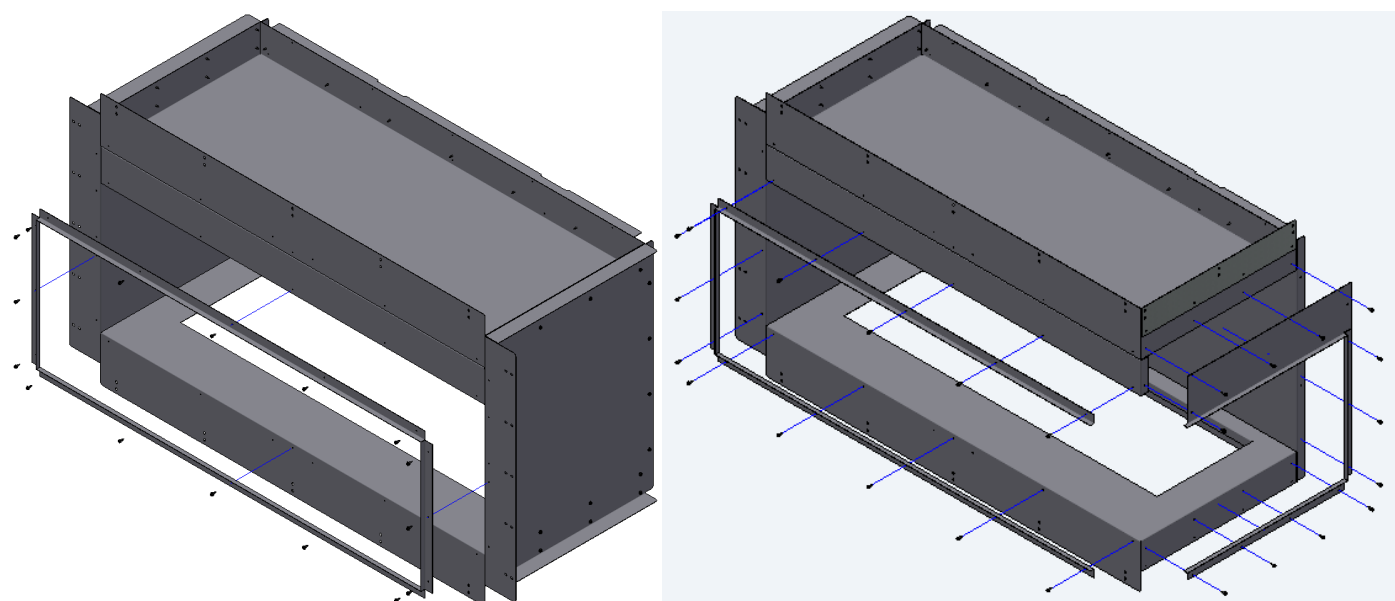
2.7 Installing Finishing Material

2.7.1 Optional Finishing Guides

The firebox comes with optional finishing guides. These guides install to the front face and side of the firebox if applicable. They provide an edge that can be finished up to with finishing material and will then cover the cut edge of the finishing material. The guides protrude 1/2 inch from the face of the firebox. For the best results use 1/2-inch-thick finishing material with the guides.

Install the guides using the included rivets or screws. After installing the guides verify that the guides meet in the corners and that the opening matches the dimensions below.

If you are using the preinstalled light trap install the shorter side guides. This will only work on the single sided installation. If you are doing a left corner or right corner installation you will need to remove the light trap and install the longer side guides. The corner guides can then be used to wrap the finishing guides around the corner.



Guide Dimensions				
Firebox	A	B (w/ light trap)	B (w/o light trap)	C
	(in)	(in)	(in)	(in)
NZ36F	36-1/16"	16-1/8"	20-1/8"	20-1/2"
NZ48F	48-1/16"			
NZ72F	72-1/16"			

2.8 Installing Light Deflector

If you want to reduce the amount of light bleed into your room, you can install the optional light deflector. Follow the steps below:

- Remove the floor plate from the waterplace unit.
- The light deflector will be placed in between the two rows of lights with the top flanges facing towards the rear of the unit. The flanges can be hand bent for fine adjustments in the deflector angle. Be sure to move any wires for the lights out of the way of the deflector so it does not come into contact or pinch them.
- Replace the floor plate and the light deflector installation is complete.



3 Electrical Connection

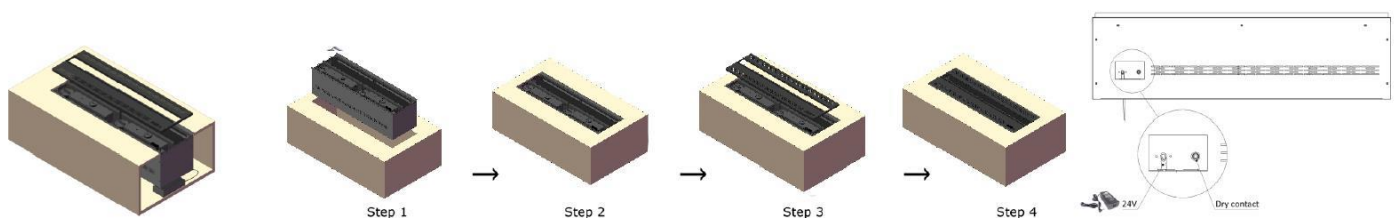
3.1 AC Power Connection

Burners must be connected to a dedicated 120 volt/60 Hz – Min. 12-amp circuit. An electrical outlet must be installed within the enclosure.

4 Burner Installation

4.1 Placing the Burner

- Plug in the burner into electrical outlet installed in the enclosure.
- If your fireplace is being connected to a water supply line, connect the water supply line before placing the burner into the enclosure.
- Lift the burner and place it into the firebox.



4.2 Burner Specifications

Table A

NetZero Firebox	NetZero Burner	Fuel Capacity	Burner Length	Burner Width	Burner Height	Approx. run time
		Gallon - (Liter)	Inches	Inches	Inches	[h]
NZW36F	NZW20B	0.5 – (2)	20	12-7/8	8-3/4	20
	NZWP20B	0.5 – (2)	20	12-7/8	11-1/4	20
NZW48F	NZW40B	1 - (4)	40	12-7/8	8-3/4	20
	NZWP40B	1 - (4)	40	12-7/8	11-1/4	20
NZW72F	NZ60WB	1.7 - (6.5)	60	12-7/8	8-3/4	20
	NZWP60B	1.7 - (6.5)	60	12-7/8	11-1/4	20

4.3 AC Installation

If an air conditioning vent or fan is located near the burner, the vent or fan must be positioned to blow away from the burner.

